

Appendix E-4
Finding Documentation

Part 5 of 5

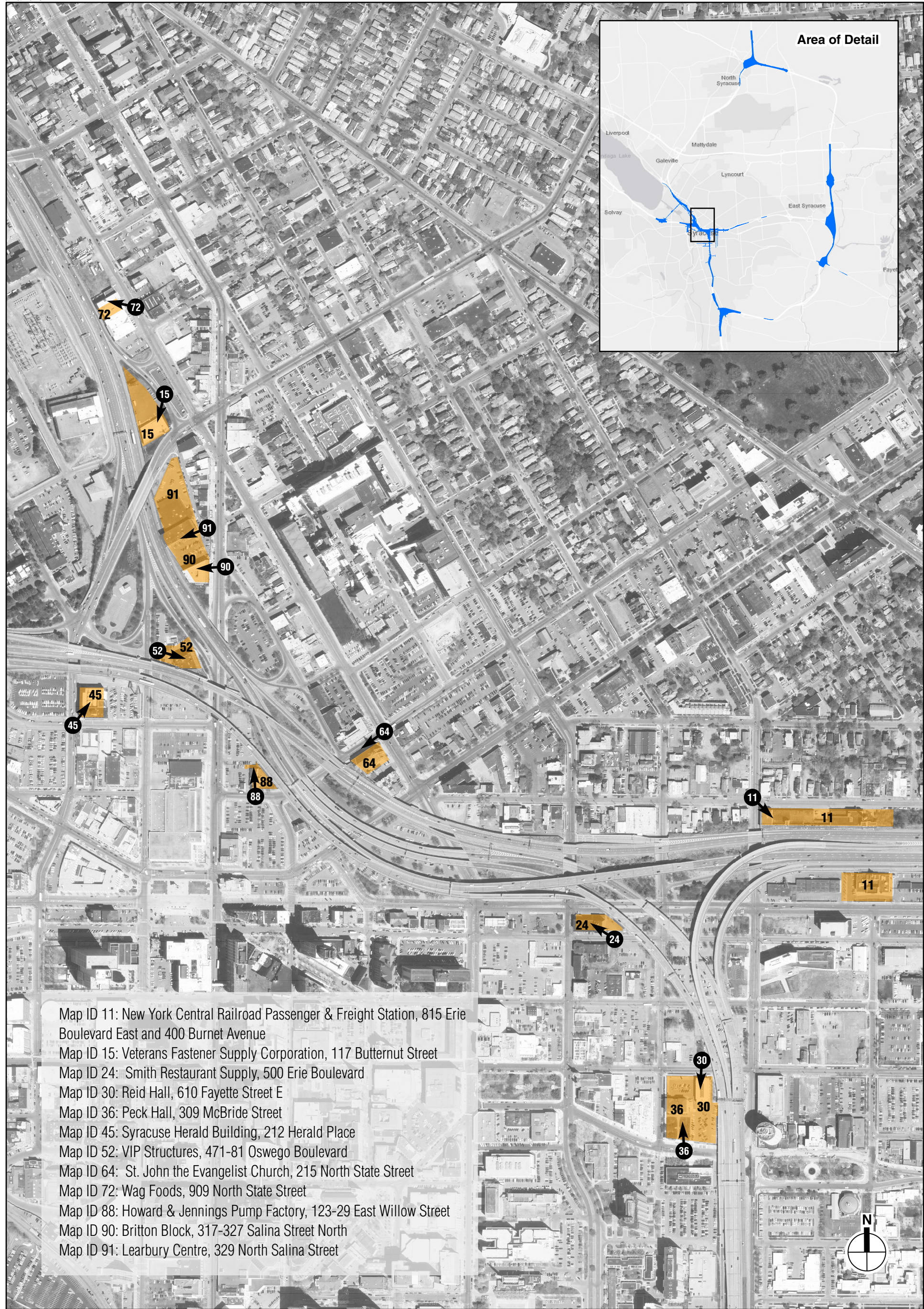
APPENDIX D

Photographs and Visualizations

Photographs of Properties Affected under the Viaduct Alternative

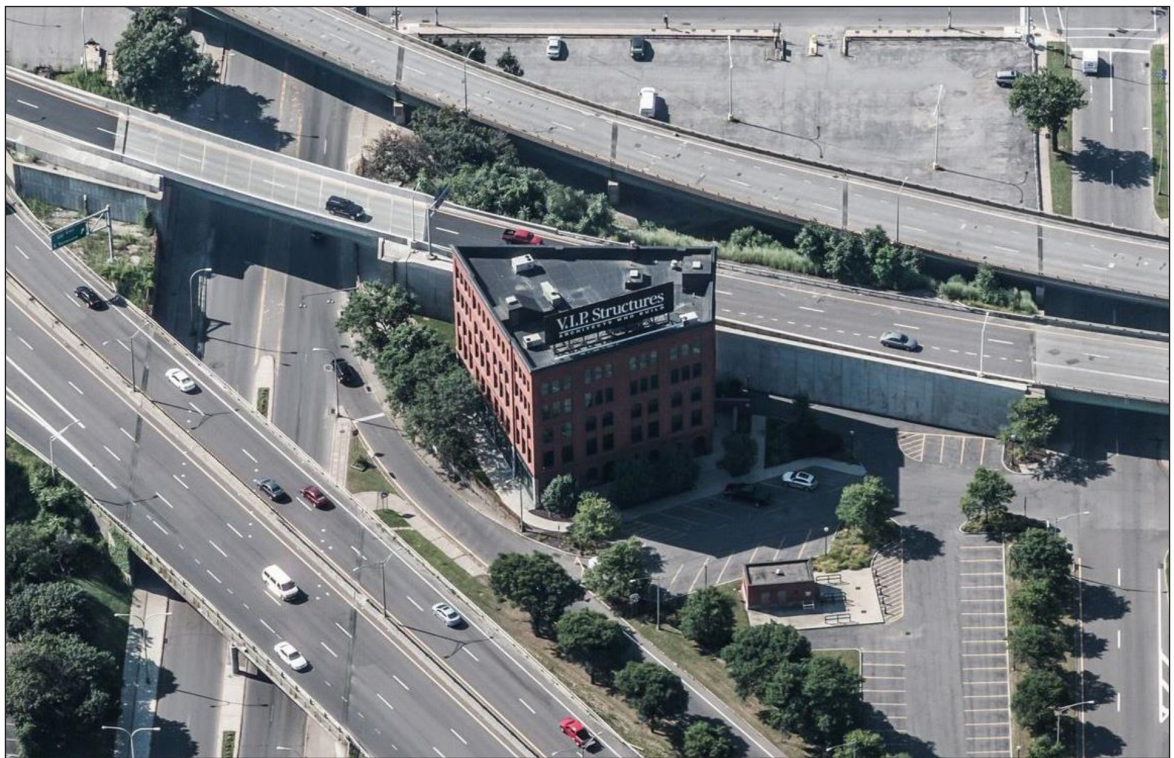
Visualization Simulations of Onondaga Creekwalk

Photographs of Affected Properties





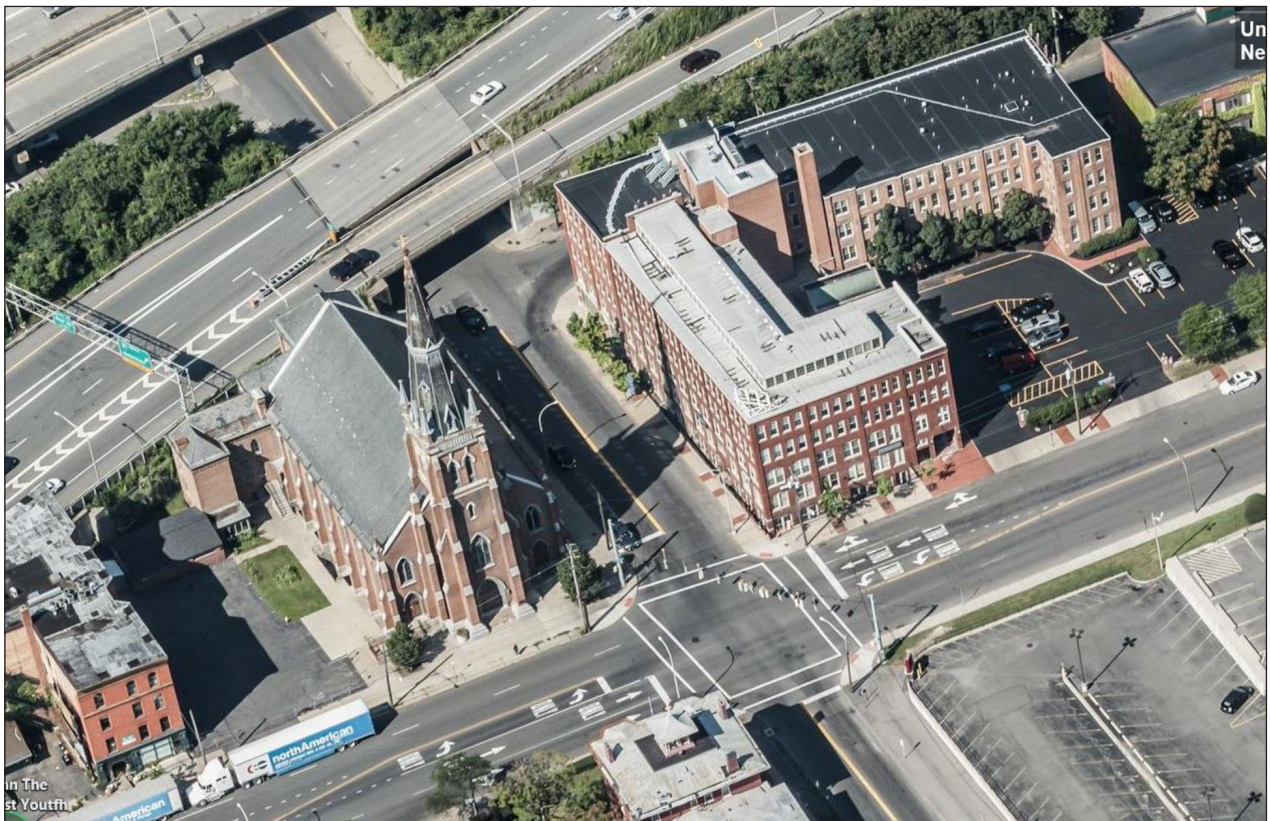
View looking east towards VIP Structures, 471-81 Oswego Boulevard (Map ID 52) from Websters Landing at North Clinton Street



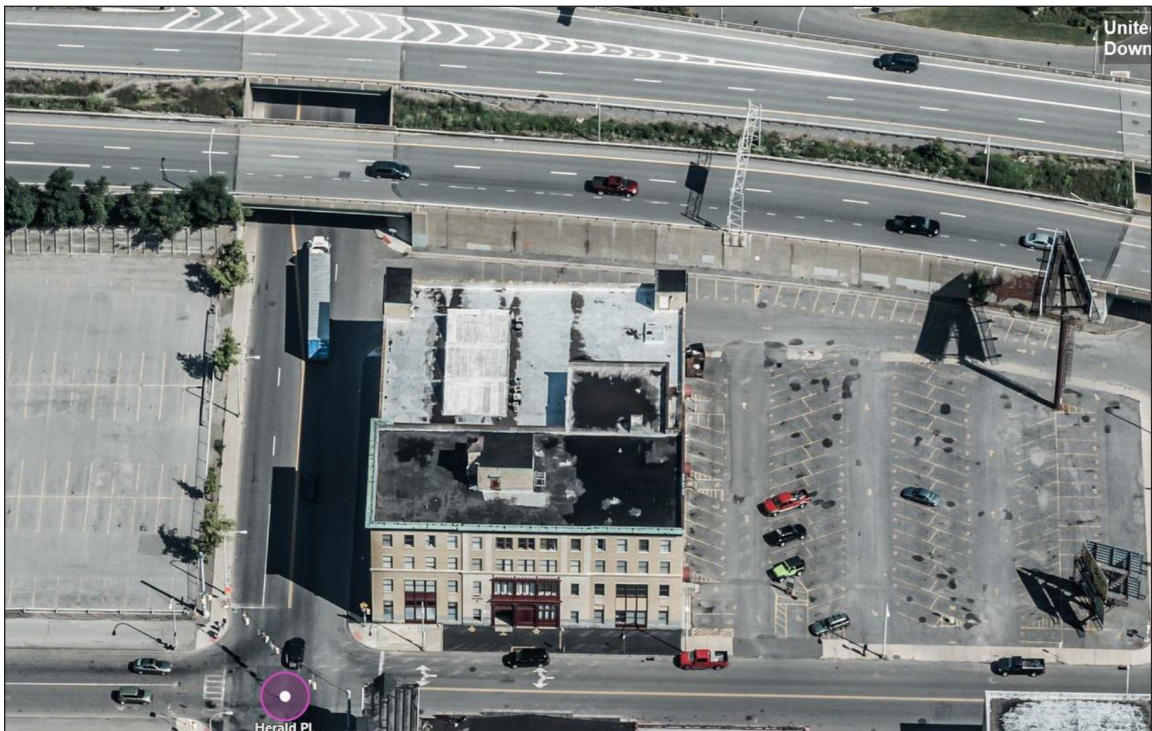
Bird's eye view looking south towards VIP Structures, 471-81 Oswego Boulevard (Map ID 52). I-81 is shown diagonally in front of the VIP Structure, I-690 is shown behind the VIP Structure; North Salina Street is shown along the east (left), and North Clinton Street is shown to the west (right)



View looking southeast from the intersection of North State Street and East Willow Street. St. John the Evangelist Church at 215 North State Street (Map ID 64) is shown on the left



Birds-eye view looking northwest, showing St. John the Evangelist Church (Map ID 64) at center left;
North State Street runs approximately north-south in the foreground and
East Willow Street intersects with North State Street at center; I-690 is visible to the rear of the church



Birds-eye view looking north towards the Syracuse Herald Building at 212 Herald Place (Map ID 45);
Herald Place runs east-west at the bottom of the view,
North Franklin Street runs north-south on the left, and I-690 is visible at the top



View from the intersection of Herald Place and North Franklin Street
looking northeast toward the Syracuse Herald Building (Map ID 45)



View looking west toward the Britton Block, 317-327 Salina Street North (Map ID 90)
from North Salina Street at Pearl Street



View looking west toward the Learbury Centre at 329 North Salina Street (Map ID 91)
from North Salina Street at East Laurel Street

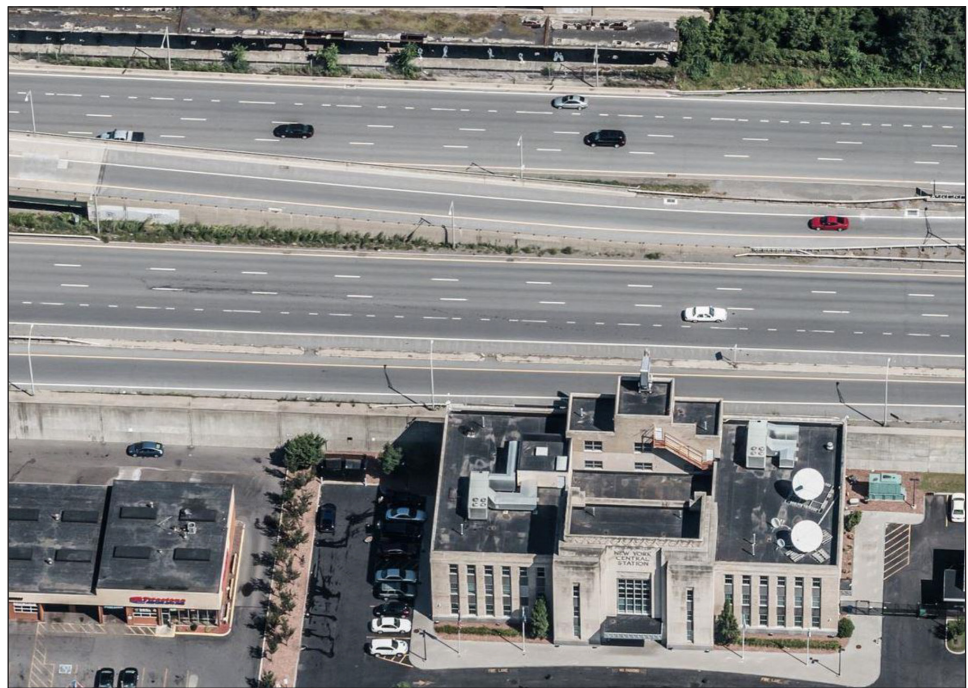


A view looking north toward the Howard & Jennings Pump Factory at 123-29 East Willow Street (Map ID 88), from East Willow Street between North Salina Street and North Warren Street

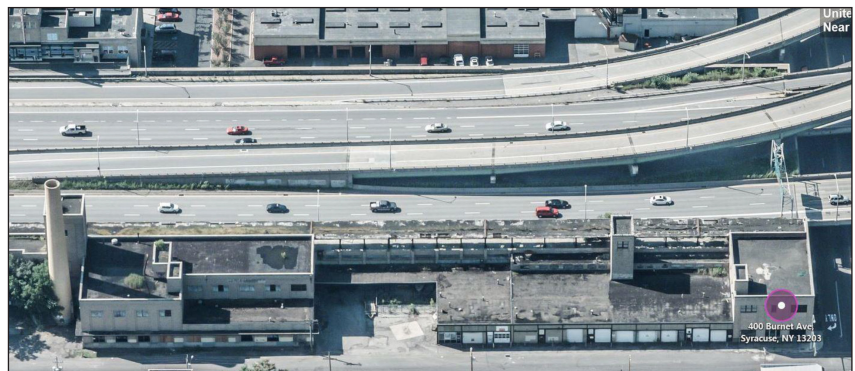
View from the intersection of Catherine Street and Burnet Avenue looking southeast toward the New York Central Railroad Freight Station at 400 Burnet Avenue (Map ID 11); elevated I-690 is visible to the far right



Birds-eye view, looking north, of the New York Central Freight Station (top) and Passenger Station (bottom) (Map ID 11); I-690 runs east-west between them



Birds-eye view, looking south, towards the New York Central Railroad Freight Station (Map ID 11); I-690 is immediately behind freight station





View looking north from East Genesee Street towards Peck Hall (Map ID 36) at 309 South McBride Street



View looking south from East Fayette Street toward Reid Hall (Map ID 30) at 610 East Fayette Street



View looking northwest toward Smith Restaurant Supply (Map ID 24) at 500 Erie Boulevard from East Water Street between South Townsend Street and South McBride Street

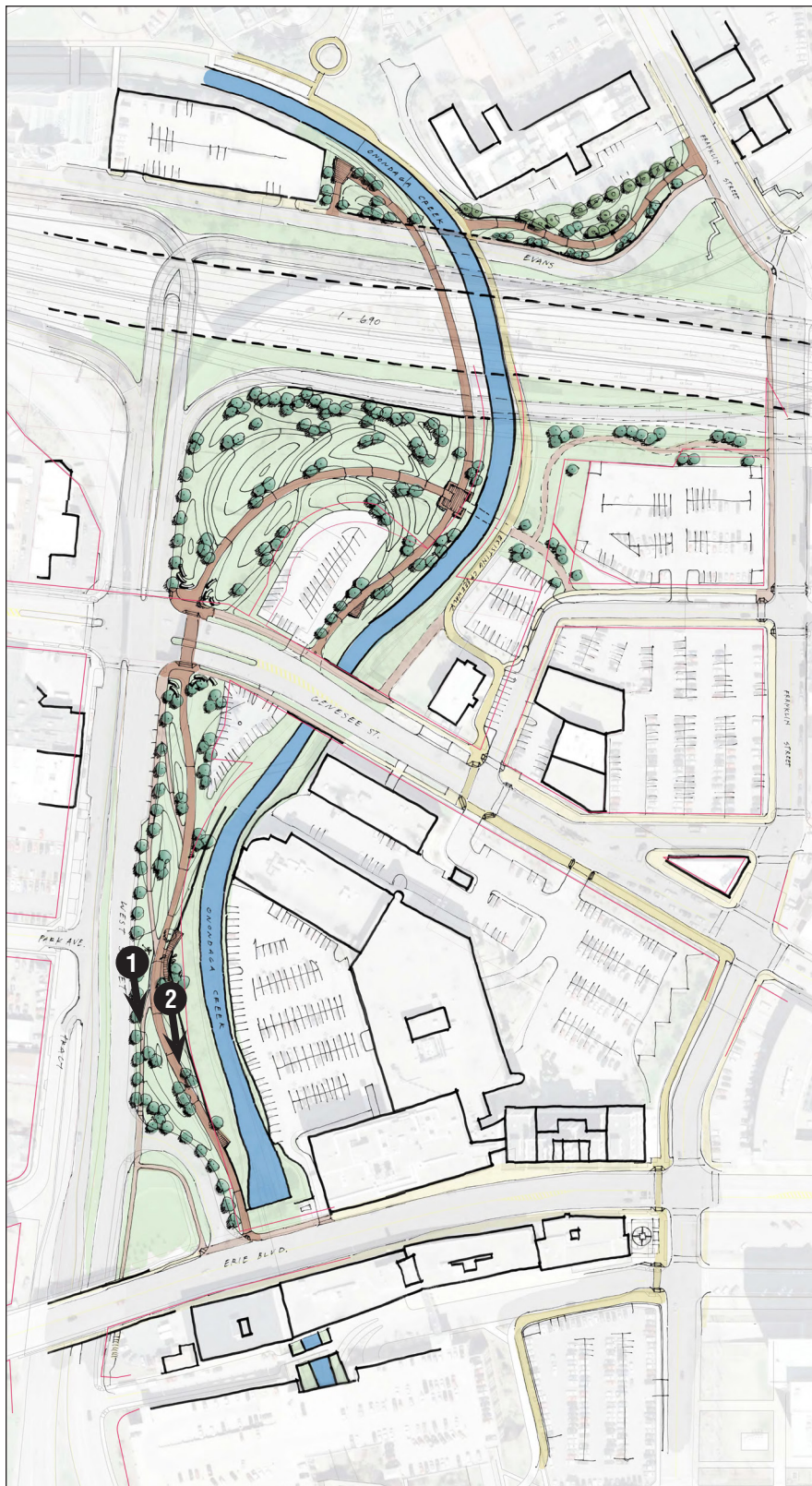


Looking southwest toward the Veterans Fastener Supply Corporation (Map ID 15) at 117 Butternut Street from the ramp that connects Butternut Street with I-81


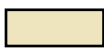



Looking northwest towards Wag Foods (Map ID 72) at 909 North State Street
between Ash Street and East Division Street

Visualization Simulations of Onondaga Creekwalk



Conceptual Plan showing the existing and proposed Onondaga Creekwalk between Evans Street and Erie Boulevard

-  Proposed Path
-  Existing Path
-  Rendering View Direction and Reference Number



Rendering View 1: Looking south towards Erie Boulevard from the proposed Onondaga Creekwalk; the view shows Overlook 2 in the foreground and Overlook 1 and the historic Erie Canal Aquaduct beyond



Rendering View 2: Looking south towards Erie Boulevard from Overlook 1 on the Onondaga Creekwalk; the view shows Overlook 1 and the shared use path in the foreground